

SUCÇÃO: 1" BSP RECALQUE: 1" BSP

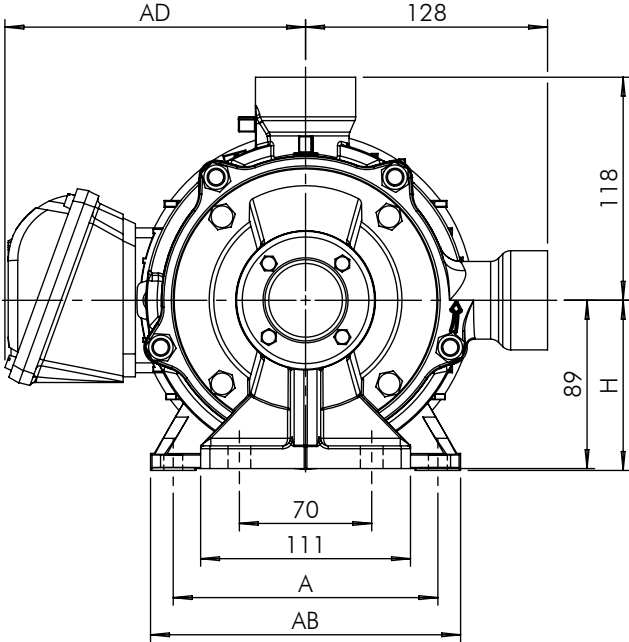
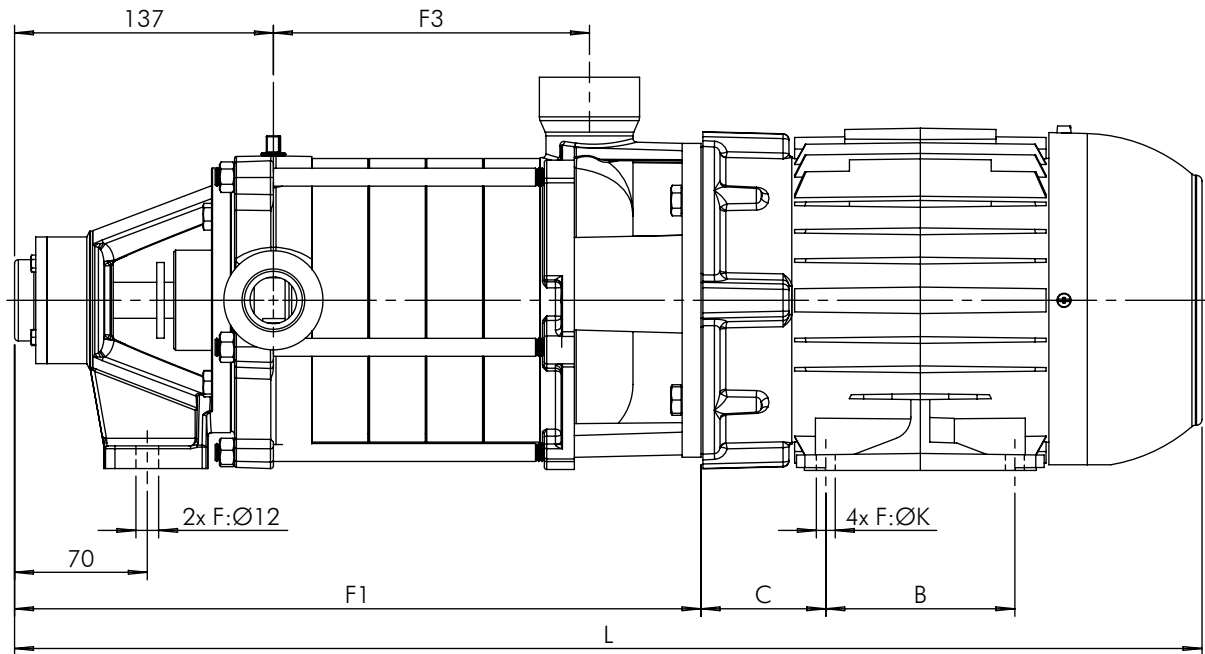


Tabela de Medidas

Modelo	CV	L	A	AB	AD	B	C	F1	F3	H	K
P-11/5 Trif.	3,0	656	140	164	159	100	66	363	168	90	10
P-11/5 Monof.		680	160	188	189	140	63			100	12
P-11/6 Trif.		686	140	164	159	100	66	393	198	90	10
P-11/6 Monof.		710	160	188	189	140	63			100	12
P-11/6 Trif.	4,0	713	140	164	159	125	66			90	10
P-11/6 Monof.		756	190	220	189	140	70			112	12
P-11/7 Trif.	3,0	716	140	164	159	100	66	423	228	90	10
P-11/7 Trif.	4,0	743				125	66			112	
P-11/7 Monof.		786	190	220	189	140	70			100	
P-11/7 Trif.	5,0	739	160	188	159		63			112	
P-11/7 Monof.		786	190	220	199	70	112				
P-11/8 Trif.	4,0	773	140	164	159	125	66	453	258	90	12
P-11/8 Monof.		816	190	220	189	140	70			112	
P-11/8 Trif.	5,0	769	160	188	169		63			100	
P-11/8 Monof.		816	190	220	199		70			112	
P-11/9 Trif.		799	160	188	169		63	100			
P-11/9 Monof.		846	190	220	189		483	288	112		
P-11/9 Trif.	6,0	817			192						

	EXECUTADO	A.P.Scarpel	16/05/03						
	VERIFICADO	A.P.Scarpel	16/05/03						
	APROVADO	A.P.Scarpel	16/05/03						
		NOME	DATA CRIAÇÃO		OBSERVAÇÃO	REVISÃO	LOCAL	Nº DOCUM.	DATA

Bomba P-11/5-9 IP-55

DESENHO Nº
074116
ESCALA: 1:4