

SUCÇÃO: 1" BSP RECALQUE: 1" BSP

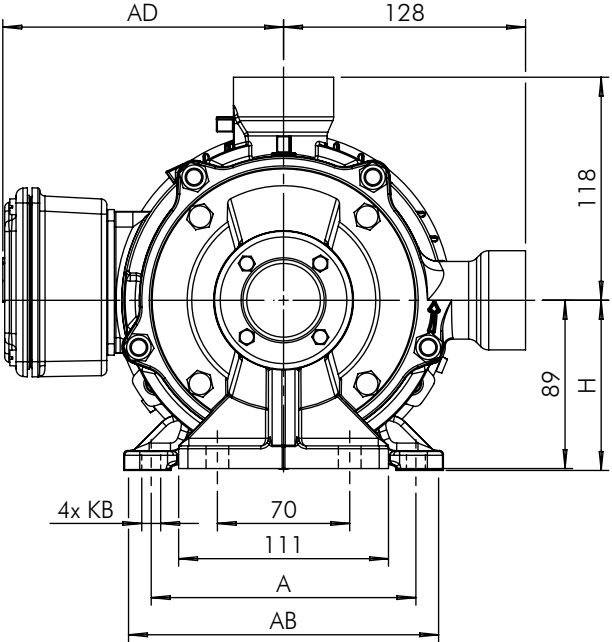
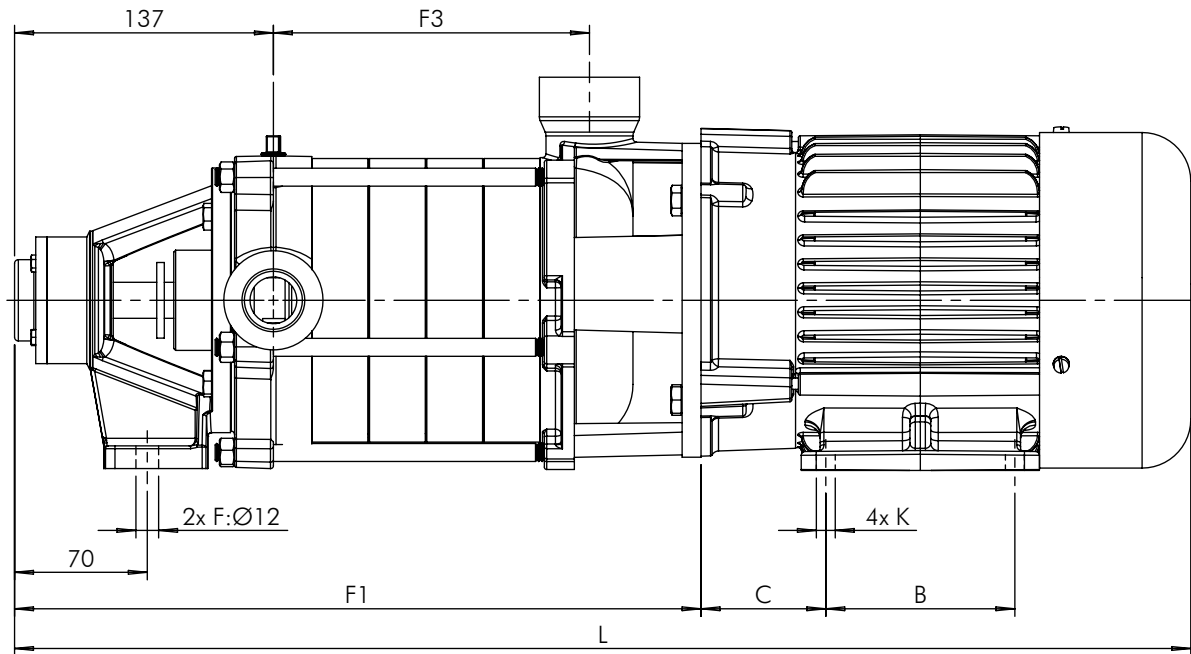



Tabela de Medidas

Modelo	CV	L	A	AB	AD	B	C	F1	F3	H	K	KB
P-11/5 Trif.	3,0	646	140	169	150	100	66	363	168	90	10	10
P-11/5 Monof.		680	160	188	193	140	63			100	12	12
P-11/6 Trif.		676	140	169	150	100	66			90	10	10
P-11/6 Monof.		710	160	188	193	140	63			100	12	12
P-11/6 Trif.	4,0	713	140	178	150	125	66	393	198	90	10	18
P-11/6 Monof.		756	190	228	215	140	70			112	12	22
P-11/7 Trif.	3,0	706	140	169	150	100	66	423	228	90	10	10
P-11/7 Trif.	4,0	743	190	178		125	66					18
P-11/7 Monof.		786	190	228	215	140	70			112		22
P-11/7 Trif.	5,0	739	160	188	159		63			100		12
P-11/7 Monof.		786	190	228	215	70	112			22		
P-11/8 Trif.	4,0	773	140	178	150	125	66	453	258	90	12	18
P-11/8 Monof.		816	190	228	215	140	70			112		22
P-11/8 Trif.	5,0	769	160	188	159		63	100	12			
P-11/8 Monof.		816	190	228	215		70	112	22			
P-11/9 Trif.		799	160	188	159		63	483	288	100		12
P-11/9 Monof.		846	190	228	215		70			112		22
P-11/9 Trif.	6,0	817			181					22		

 BOMBAS HIDRÁULICAS EBARA CORPORATION	EXECUTADO	F. Conte	02/03/21	Motor NOVA IP-55					
	VERIFICADO	Gustavo G.	02/03/21						
	APROVADO	Gustavo G.	02/03/21						
		NOME	DATA CRIAÇÃO	OBSERVAÇÃO	REVISÃO	LOCAL	Nº DOCUM.	DATA	APROVADO

Bomba P-11/5-9 IP-55

DESENHO Nº
074116N



ESCALA: 1:4