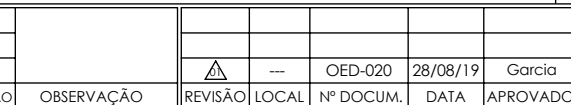


RECALQUE: - . -



Pos.	Descrição	Material	Qtde
21	Protetor	SAE 1020	2
22	Parafuso Sextavado	ZB (SAE)	4
23	Arruela lisa	ZB (SAE)	4
24	Anel O'ring	Borracha nitrílica	1
25	Bujão	Ferro	2
26	Parafuso sextavado	SAE 1020	6
27	Tampa de pressão	GG20	1
28	Anel desgaste Realque	Nodular	1
29	Anel desgaste Sucção	Nodular	1
30	Bujão	Ferro	3
31	Carcaça	GG20	1
32	Parafuso sextavado	SAE 1020	8
33	Rotor	GG20	1




 ESCALA:1:9

UNID.: Milímetro (mm)
-----------------------



EBARA CORPORATION

## Relação de Peças TH 65/200 Mancal

Modelo	Pos.	Descrição	GAXETA		SELO T21	
			Qtde	Código	Qtde	Código
SUPORTE TH-40	1	ANEL CADEADO TH-40/TH-40R	1	1127.04.02550	**	**
	2	ANEL O'RING DIAM.34,65x1,78MM	1	1127.04.10069	1	1127.04.10069
	3	APERTA GAXETA TH-40/TH-40R	1	1127.04.02549	**	**
	4	ARRUELA LISA 3/8"	1	1127.04.00352	1	1127.04.00352
	5	BUCHA PROTECAO DO EIXO TH-40 MANCAL SELO/GAX NODULAR	1	1127.04.03186	**	**
		BUCHA PROTECAO DO EIXO TH-40 MANCAL SELO/GAX INOX 304	**	**	1	1127.04.02900
	6	CHAVETA 10x8x70MM (AA)	1	1127.04.02505	1	1127.04.02505
	7	CHAVETA 8x7x50MM (AB)	1	1127.04.02506	1	1127.04.02506
	8	EIXO TH-40	1	1127.04.02545	1	1127.04.02545
	9	PARAF.SEXT. UNC 1/4" X 5/8" RI	4	1127.04.00297	4	1127.04.00297
	10	PARAF.SEXT. UNC 3/8 x 7/8" RI	1	1127.04.00313	1	1127.04.00313
	11	GAXETA 3/8"	0.75 MT	1127.04.00270	**	**
	12	SELO MEC.1 3/4" T21 BUNA	**	**	1	1127.04.00229
	13	PORCA DO EIXO TH-40	1	1127.04.02518	1	1127.04.02518
	14	PORCA SEXT.UNC 3/8"	2	1127.04.00345	**	**
	15	PRISIONEIRO GAXETA UNC 3/8 x 95MM	2	1127.04.00183	**	**
	16	ANEL CENTRIFUGADOR 40X76X6 - TH-40	2	1127.04.11207	2	1127.04.11207
	17	ROLAMENTO 6308 ZZ C3	2	1127.04.10417	2	1127.04.10417
	18	SUPORTE DE APOIO GS/105X110	1	1127.04.12386	1	1127.04.12386
	19	SUPORTE TH-40 (08/20)	1	1127.04.11210	1	1127.04.11210
	20	TAMPA SUPORTE GS/240	1	1127.04.10932	1	1127.04.10932
	21	PROTETOR TH-40	2	1127.04.11208	2	1127.04.11208
	22	PARAF.SEXT.UNC 3/16 x 1/2 RI	4	1127.04.00811	4	1127.04.00811
	23	ARRUELA LISA No.10 (3/16) ZB	4	1127.04.10732	4	1127.04.10732
TAMPA PRES.	24	ANEL O'RING 221,92 x 2,62MM BUNA-N	1	1127.04.10160	1	1127.04.10160
	25	BUJÃO 1/2" BSP	2	1127.04.00775	**	**
	26	PARAF.SEXT.UNC 3/8" X 1.1/4" RI	6	1127.04.00315	6	1127.04.00315
CARCACA	27	TAMPA DE PRESSÃO TH-65/200	1	1127.04.02573	1	1127.04.03063
	28	ANEL DE DESGASTE TH-65/200 65/160 80/160 RECALQUE	1	1127.04.02735	1	1127.04.02735
	29	ANEL DE DESGASTE TH-65/125 SUCCÃO	1	1127.04.02602	1	1127.04.02602
	30	BUJÃO 3/8" BSP	3	1127.04.00176	3	1127.04.00176
	31	CARCAÇA TH-65/200	1	1127.04.03068	1	1127.04.03068
	32	PARAF.SEXT.UNC 3/8 x 1 1/4 RI	8	1127.04.00315	8	1127.04.00315
	33	ROTOR TH-65/200 219MM	1	1127.04.02626	1	1127.04.02626

Kit Contra Flange	Qtde	Código	Bocal
CONTRA FLANGE DN-100 ANSI B16.1	1	1127.04.02224	SUC - 4"
CONTRA FLANGE ANSI DN65 B16.1FF 125LB	1	1127.04.02209	REC - 2.1/2"
PARAF.SEXT.UNC 5/8 x 3 RP	8	1127.04.00700	SUC
PARAF.SEXT.UNC 5/8 x 2 1/2 RP	4	1127.04.00333	REC
PORCA SEXT.UNC 5/8"	12	1127.04.00348	SUC/REC
JUNTA BORRACHA P/C.FLANGE DN-100 ANSI B16.1 (2224)	1	1127.04.07899	SUC
JUNTA BORRACHA P/C.FLANGE ANSI DN65 B16.1FF 125LB (2209)	1	1127.04.07898	REC