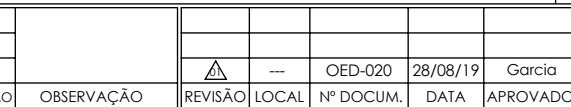


RECALQUE: - . -



C

DC

ESCALA:1:9

|                       |
|-----------------------|
| UNID.: Milímetro (mm) |
|-----------------------|



EBARA CORPORATION

## Relação de Peças TH 65/250 Mancal

| Modelo         | Pos. | Descrição   | GAXETA  |               | SELO T21 |               |
|----------------|------|---|---------|---------------|----------|---------------|
|                |      |   | Qtde    | Código        | Qtde     | Código        |
| SUPORTE TH-40R | 1    | ANEL CADEADO TH-40/TH-40R                                   | 1       | 1127.04.02550 | **       | **            |
|                | 2    | ANEL O'RING DIAM.34,65x1,78MM                               | 1       | 1127.04.10069 | 1        | 1127.04.10069 |
|                | 3    | APERTA GAXETA TH-40/TH-40R                                  | 1       | 1127.04.02549 | **       | **            |
|                | 4    | ARRUELA LISA 3/8"   | 1       | 1127.04.00352 | 1        | 1127.04.00352 |
|                | 5    | BUCHA PROTECAO DO EIXO TH-40R MANCAL SELO/GAX NODULAR 11/8  | 1       | 1127.04.02796 | **       | **            |
|                |      | BUCHA PROTECAO DO EIXO TH-40R MANCAL SELO/GAX INOX 304 11/8 | **      | **            | 1        | 1127.04.02901 |
|                | 6    | CHAVETA 10x8x70MM (AA)                                      | 1       | 1127.04.02505 | 1        | 1127.04.02505 |
|                | 7    | CHAVETA 10x8x50MM (AB)                                      | 1       | 1127.04.08948 | 1        | 1127.04.08948 |
|                | 8    | EIXO TH-40R 11/08   | 1       | 1127.04.02785 | 1        | 1127.04.02785 |
|                | 9    | PARAF.SEXT. UNC 1/4" X 5/8" RI                              | 4       | 1127.04.00297 | 4        | 1127.04.00297 |
|                | 10   | PARAF.SEXT. UNC 3/8 x 7/8" RI                               | 1       | 1127.04.00313 | 1        | 1127.04.00313 |
|                | 11   | GAXETA 3/8"   | 0.75 MT | 1127.04.00270 | **       | **            |
|                | 12   | SELO MEC.1 3/4" T21 BUNA                                    | **      | **            | 1        | 1127.04.00229 |
|                | 13   | PORCA DO EIXO TH-40R  | 1       | 1127.04.02519 | 1        | 1127.04.02519 |
|                | 14   | PORCA SEXT.UNC 3/8"   | 2       | 1127.04.00345 | **       | **            |
|                | 15   | PRISIONEIRO GAXETA UNC 3/8 x 95MM                           | 2       | 1127.04.00183 | **       | **            |
|                | 16   | ANEL CENTRIFUGADOR 40X76X6 - TH-40                          | 2       | 1127.04.11207 | 2        | 1127.04.11207 |
|                | 17   | ROLAMENTO 6308 ZZ C3  | 2       | 1127.04.10417 | 2        | 1127.04.10417 |
|                | 18   | SUPORTE DE APOIO GS/125X110                                 | 1       | 1127.04.12301 | 1        | 1127.04.12301 |
|                | 19   | SUPORTE TH-40 (08/20)                                       | 1       | 1127.04.11210 | 1        | 1127.04.11210 |
|                | 20   | TAMPA SUPORTE GS/240  | 1       | 1127.04.10932 | 1        | 1127.04.10932 |
|                | 21   | PROTETOR TH-40  | 2       | 1127.04.11208 | 2        | 1127.04.11208 |
|                | 22   | PARAF.SEXT.UNC 3/16 x 1/2 RI                                | 4       | 1127.04.00811 | 4        | 1127.04.00811 |
|                | 23   | ARRUELA LISA No.10 (3/16) ZB                                | 4       | 1127.04.10732 | 4        | 1127.04.10732 |
| TAMPA PRES.    | 24   | ANEL O'RING 269 x 2,62MM BUNA-N                             | 1       | 1127.04.10161 | 1        | 1127.04.10161 |
|                | 25   | BUJÃO 1/2" BSP  | 2       | 1127.04.00775 | **       | **            |
|                | 26   | PARAF.SEXT.UNC 3/8" X 1.1/4" RI                             | 6       | 1127.04.00315 | 6        | 1127.04.00315 |
|                | 27   | TAMPA DE PRESSÃO TH-65/250                                  | 1       | 1127.04.02604 | 1        | 1127.04.03087 |
| CARCAÇA        | 28   | ANEL DESGASTE TH-65/250-TH-80/250 REC.                      | 1       | 1127.04.02606 | 1        | 1127.04.02606 |
|                | 29   | ANEL DESGASTE TH-65-315 /TH-65/250 SUC.                     | 1       | 1127.04.02500 | 1        | 1127.04.02500 |
|                | 30   | BUJÃO 3/8" BSP  | 3       | 1127.04.00176 | 3        | 1127.04.00176 |
|                | 31   | CARCAÇA TH-65/250 250LB                                     | 1       | 1127.04.02419 | 1        | 1127.04.02419 |
|                | 32   | PARAF.SEXT. UNC 3/8" X 1 1/2                                | 10      | 1127.04.00316 | 10       | 1127.04.00316 |
|                | 33   | ROTOR TH-65/250 260MM MANCAL 11/08                          | 1       | 1127.04.02791 | 1        | 1127.04.02791 |

| Kit Contra Flange                                     | Qtde | Código        | Bocal        |
|---|------|---------------|--------------|
| CONTRA FLANGE ANSI DN100 250LB BSP                    | 1    | 1127.04.05276 | SUC - 4"     |
| CONTRA FLANGE ANSI DN65 250LB BSP                     | 1    | 1127.04.05545 | REC - 2.1/2" |
| PARAF.SEXT.UNC 3/4 x 3 1/2 RP                         | 8    | 1127.04.00635 | SUC          |
| PARAF.SEXT.UNC 3/4 x 3 RP                             | 8    | 1127.04.04309 | REC          |
| PORCA SEXT.UNC 3/4"                                   | 16   | 1127.04.00636 | SUC/REC      |
| JUNTA BORRACHA P/C.FLANGE ANSI DN100 250LB BSP (5276) | 1    | 1127.04.07886 | SUC          |
| JUNTA BORRACHA P/C.FLANGE ANSI DN65 250LB BSP (5545)  | 1    | 1127.04.07895 | REC          |