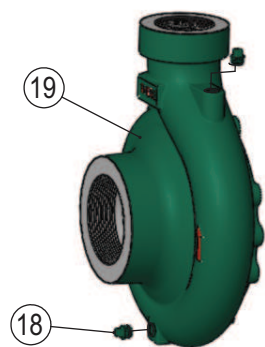
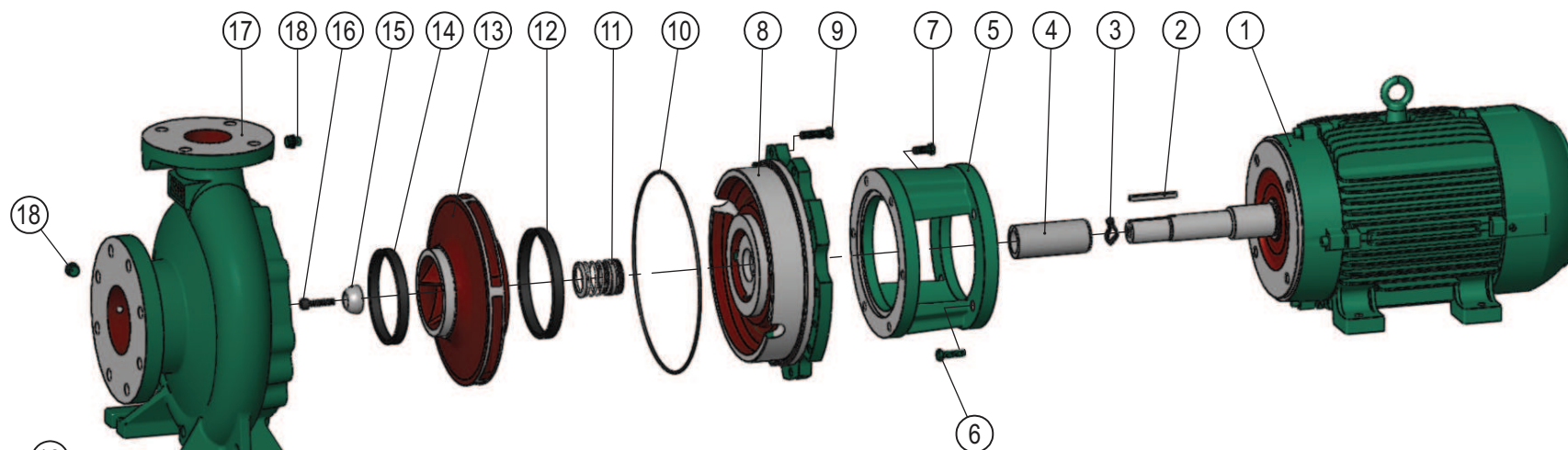


TH NormBloc Maior ou Igual a 4cv Selo



Pos.	Descrição	Material	Qtde
1	Motor elétrico IP-55	-	01
2	Chaveta Forma AA	SAE 1045	01
3	Anel o'ring	Borracha nitrílica	-
4	Bucha de Proteção eixo	AISI 304	01
5	Intermediário	ASTM A48 CL250	01
6	Parafuso sextavado	SAE 1020	04
7	Parafuso sextavado	SAE 1020	-
8	Tampa de pressão selo	ASTM A48 CL250	01
9	Parafuso sextavado	SAE 1020	-
10	Anel o'ring da tampa	Borracha Nitrílica	01
11	Selo mecânico T21	-	01
12	Anel de desgaste do rotor	ASTM A536 65-45-12	01
13	Rotor	ASTM A48 CL250	01
14	Anel de desgaste carcaça	ASTM A536 65-45-12	01
15	Semi-esfera eixo TH	AISI420/SAE1045	01
16	Parafuso allen	SAE 1020	01
17	Carcaça flangeada	ASTM A48 CL250	01
18	Bujão	SAE 1020	03
19	Carcaça rosca (Opcional)	ASTM A48 CL250	01

Relação de Peças TH-80/160 Monobloco Selo Flange

	Código	Descrição	4,0 à 7,5 CV Qty	7,5 Monf. à 25,0 CV Qty	30,0 à 50,0 CV Qty
MOTOR	- - -	MOTOR BLINDADO IP-55	1	1	1
INTERMED.	1127.04.03027	INTERMEDIARIO TH-40 (7,5CV)	1	-	-
	1127.04.02986	INTERMEDIARIO TH-40/TH-40R 10 A 25 CV	-	1	-
	1127.04.02759	INTERMEDIARIO TH-40/TH-40R 30 CV	-	-	1
	1127.04.00314	PARAF.SEXT.UNC 3/8 x 1 RI	4	-	-
	1127.04.01104	PARAF.SEXT.UNC 1/2 x 1 1/4 RI	-	4	-
TAMPA PRES.	1127.04.00722	PARAF.SEXT.UNC 5/8 x 1 1/4 RI	-	-	4
	1127.04.10159	ANEL O'RING 177,47 x 2,62MM BUNA-N	1	1	1
	1127.04.00316	PARAF.SEXT.UNC 3/8 x 1 1/2	6	6	6
	1127.04.03445	TAMPA PRES.TH-65-80(160) B-SELO 1.3/8	1	-	-
	1127.04.03047	TAMPA PRES.TH-65-80(160) M/B-SELO 1.3/4	-	1	1
SELO	1127.04.12215	ANEL O'RING DIAM.25 X 1MM	1	-	-
	1127.04.10069	ANEL O'RING DIAM.34,65x1,78MM	-	1	1
	1127.04.02897	BUCHA PROTECAO DO EIXO TH-30 MONOBL. INOX 304	1	-	-
	1127.04.02902	BUCHA PROTECAO DO EIXO TH-65/160 MONO INOX304	-	1	1
	1127.04.00230	SELO MEC.1 3/8" T21 BUNA 406397/122SBP4RS	1	-	-
ROTOR	1127.04.00229	SELO MEC.1 3/4" T21 BUNA COD.665191	-	1	1
	1127.04.02735	ANEL DESG.TH-65/160R/200R - TH-80/160R - RL-33/A	1	1	1
	1127.04.04671	ROTOR TH-80/160 172X7/8 BLOC	1	-	-
SEMI-ESFERA	1127.04.03328	ROTOR TH-80/160 172X31.75 BLOC	-	1	1
	1137.01.01561	PARAF. ALLEN 3/8 X 1.1/2	1	-	-
	1127.04.03081	SEMI-ESFERA Ø30	1	-	-
	1127.04.03077	PARAF. ALLEN 1/2" X 1.1/2" C/CAB. UNC	-	1	1
CARCACA	1127.04.03080	SEMI-ESFERA Ø38	-	1	1
	1127.04.02536	ANEL DESG.TH-80/160S/200S/250S/315S	1	1	1
	1127.04.00176	BUJAO 3/8" BSP PRETA	3	3	3
	1127.04.02608	CARCACA TH-80/160	1	1	1

Kit Contra Flange		Bocal	Qtde
1127.04.05551	CONTRA FLANGE ANSI DN125 125LB BSP	SUC - 5"	1
1127.04.02223	CONTRA FLANGE DN-80 ANSI B16.1	REC - 3"	1
1127.04.04309	PARAF.SEXT.UNC 3/4 x 3 RP	SUC	8
1127.04.00636	PORCA SEXT.UNC 3/4"	SUC	8
1127.04.00333	PARAF.SEXT.UNC 5/8 x 2 1/2 RP	REC	4
1127.04.00348	PORCA SEXT.UNC 5/8"	REC	4
1127.04.07887	JUNTA BORRACHA P/C.FLANGE ANSI DN125 125LB BSP (5551)	SUC	1
1127.04.07901	JUNTA BORRACHA P/C.FLANGE DN-80 ANSI B16.1 (2223)	REC	1

OBS: Bomba com motor de 7,5 cv 4 Polos utiliza-se as peças de 10,0 cv