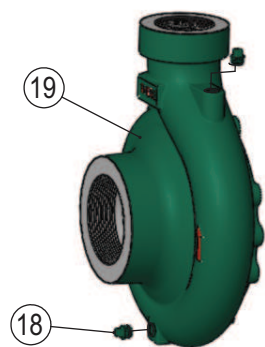
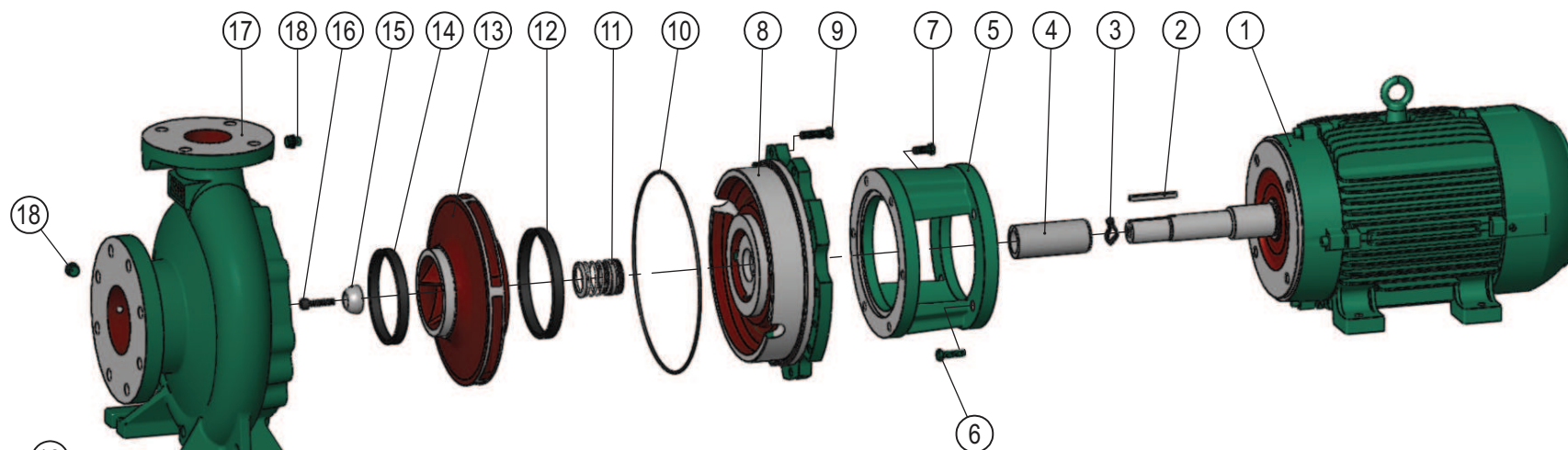


TH NormBloc Maior ou Igual a 4cv Selo



Pos.	Descrição	Material	Qtde
1	Motor elétrico IP-55	-	01
2	Chaveta Forma AA	SAE 1045	01
3	Anel o'ring	Borracha nitrílica	-
4	Bucha de Proteção eixo	AISI 304	01
5	Intermediário	ASTM A48 CL250	01
6	Parafuso sextavado	SAE 1020	04
7	Parafuso sextavado	SAE 1020	-
8	Tampa de pressão selo	ASTM A48 CL250	01
9	Parafuso sextavado	SAE 1020	-
10	Anel o'ring da tampa	Borracha Nitrílica	01
11	Selo mecânico T21	-	01
12	Anel de desgaste do rotor	ASTM A536 65-45-12	01
13	Rotor	ASTM A48 CL250	01
14	Anel de desgaste carcaça	ASTM A536 65-45-12	01
15	Semi-esfera eixo TH	AISI420/SAE1045	01
16	Parafuso allen	SAE 1020	01
17	Carcaça flangeada	ASTM A48 CL250	01
18	Bujão	SAE 1020	03
19	Carcaça rosca (Opcional)	ASTM A48 CL250	01



EBARA CORPORATION

Relação de Peças TH-80/315 Monobloco Selo Flange

Código		Descrição	7,5 Monf. à 25,0 CV Qtd	30,0 à 60,0 CV Qtd
MOTOR	- - -	MOTOR BLINDADO IP-55	1	1
INTERMED.	1127.04.02689	INTERMEDIARIO TH-50 10,0 CV	1	-
	1127.04.02690	INTERMEDIARIO TH-50 30,0 CV	-	1
	1127.04.01104	PARAF.SEXT.UNC 1/2 x 1 1/4 RI	4	-
	1127.04.00722	PARAF.SEXT.UNC 5/8 x 1 1/4 RI	-	4
TAMPA PRES.	1127.04.10162	ANEL O'RING 335 x 2,62MM BUNA-N	1	1
	1127.04.00328	PARAF.SEXT.BSW 1/2 x 1 1/4 RI	8	8
	1127.04.03050	TAMPA PRES.TH-65-80-100-125(315) B-SELO 1.3/4	1	1
SELO	1127.04.10069	ANEL O'RING DIAM.34,65x1,78MM	1	1
	1127.04.02903	BUCHA PROTECAO DO EIXO TH-100/315 MONOBL. SELO INOX 304	1	1
	1127.04.00229	SELO MEC.1 3/4" T21 BUNA COD.665191	1	1
ROTOR	1127.04.02283	ANEL DESG.TH-65/315R - TH-80/200R/315R - TH-100/160R/200R/315R - TH-125/315R	1	1
	1127.04.06741	ROTOR TH-80/315 332X31.75 BLOC (11/13) (KIT)	1	1
SEMI-ESFERA	1127.04.03077	PARAF. ALLEN 1/2" X 1.1/2" C/CAB. UNC	1	1
	1127.04.03080	SEMI-ESFERA Ø38	1	1
CARCACA	1127.04.02537	ANEL DESG.TH-80/400S	1	1
	1127.04.00775	BUJAO 1/2" BSP PRETA	3	3
	1127.04.06742	CARCACA TH-80/315 (11/13) (KIT)	1	1
	1127.04.00329	PARAF.SEXT.BSW 1/2 x 1 1/2 RI	12	12

Kit Contra Flange		Bocal	Qtde
1127.04.05551	CONTRA FLANGE ANSI DN125 125LB BSP	SUC - 5"	1
1127.04.02223	CONTRA FLANGE DN-80 ANSI B16.1	REC - 3"	1
1127.04.04309	PARAF.SEXT.UNC 3/4 x 3 RP	SUC	8
1127.04.00636	PORCA SEXT.UNC 3/4"	SUC	8
1127.04.00333	PARAF.SEXT.UNC 5/8 x 2 1/2 RP	REC	4
1127.04.00348	PORCA SEXT.UNC 5/8"	REC	4
1127.04.07887	JUNTA BORRACHA P/C.FLANGE ANSI DN125 125LB BSP (5551)	SUC	1
1127.04.07901	JUNTA BORRACHA P/C.FLANGE DN-80 ANSI B16.1 (2223)	REC	1

OBS:	Bomba com motor de 7,5 cv 4 Polos utiliza-se as peças de 10,0 cv
	Bomba com motor de 25,0 cv 4 Polos utiliza-se as peças de 30,0 cv