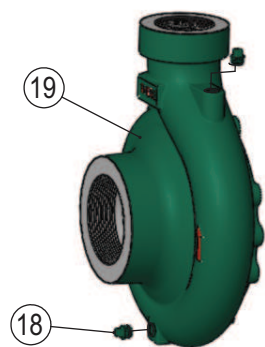
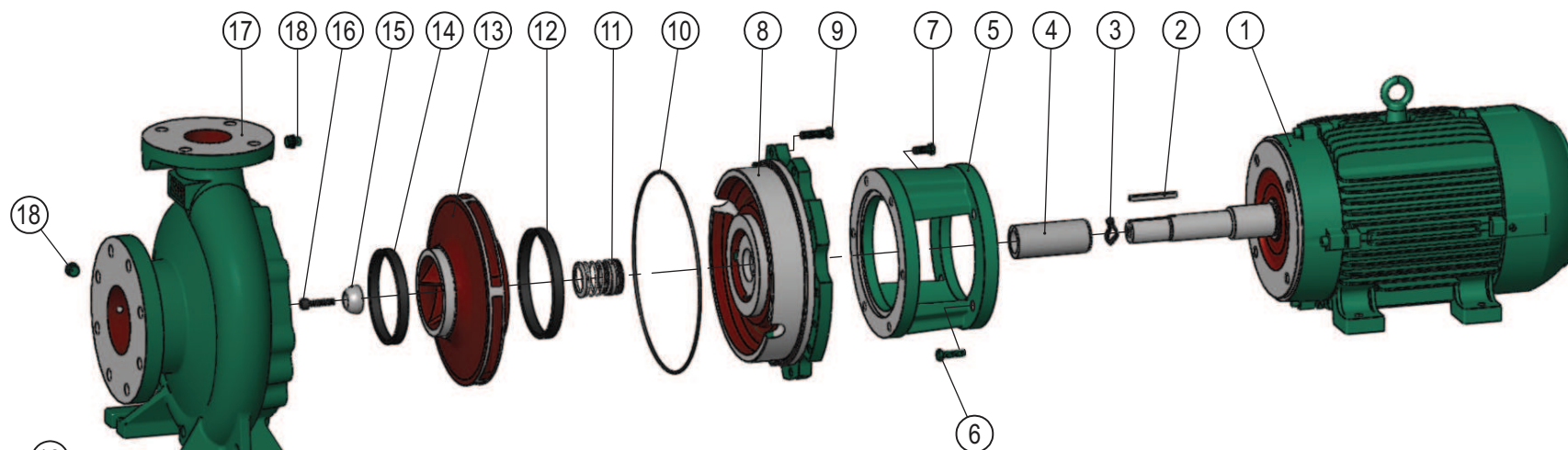


TH NormBloc Maior ou Igual a 4cv Selo



Pos.	Descrição	Material	Qtde
1	Motor elétrico IP-55	-	01
2	Chaveta Forma AA	SAE 1045	01
3	Anel o'ring	Borracha nitrílica	-
4	Bucha de Proteção eixo	AISI 304	01
5	Intermediário	ASTM A48 CL250	01
6	Parafuso sextavado	SAE 1020	04
7	Parafuso sextavado	SAE 1020	-
8	Tampa de pressão selo	ASTM A48 CL250	01
9	Parafuso sextavado	SAE 1020	-
10	Anel o'ring da tampa	Borracha Nitrílica	01
11	Selo mecânico T21	-	01
12	Anel de desgaste do rotor	ASTM A536 65-45-12	01
13	Rotor	ASTM A48 CL250	01
14	Anel de desgaste carcaça	ASTM A536 65-45-12	01
15	Semi-esfera eixo TH	AISI420/SAE1045	01
16	Parafuso allen	SAE 1020	01
17	Carcaça flangeada	ASTM A48 CL250	01
18	Bujão	SAE 1020	03
19	Carcaça rosca (Opcional)	ASTM A48 CL250	01



EBARA CORPORATION

Relação de Peças TH-125/250 Monobloco Selo Flange

	Código	Descrição	20,0 à 25,0 CV Qtd	30,0 à 50,0 CV Qtd
MOTOR	- - -	MOTOR BLINDADO IP-55	1	1
INTERMED.	1127.04.02689	INTERMEDIARIO TH-50 10,0 A 25,0 CV	1	-
	1127.04.02690	INTERMEDIARIO TH-50 30,0 CV	-	1
	1127.04.01104	PARAF.SEXT.UNC 1/2 x 1 1/4 RI	4	-
	1127.04.00722	PARAF.SEXT.UNC 5/8 x 1 1/4 RI	-	4
TAMPA PRES.	1127.04.10161	ANEL O'RING 269 x 2,62MM BUNA-N	1	1
	1127.04.00328	PARAF.SEXT.BSW 1/2 x 1 1/4 RI	8	8
	1127.04.03121	TAMPA PRES.TH-100-125-150(250) B-SELO 1.3/4	1	1
SELO	1127.04.10069	ANEL O'RING DIAM.34,65x1,78MM	1	1
	1127.04.02903	BUCHA PROTECAO DO EIXO TH-100/315 MONOBL. SELO INOX 304	1	1
	1127.04.00229	SELO MEC.1 3/4" T21 BUNA COD.665191	1	1
ROTOR	1127.04.02194	ANEL DESG.TH-80/400R - TH-100/250R/400R - TH-125/200R.S/250R.S/315S/400R.S	1	1
	1127.04.03147	ROTOR TH-125/250 265X31.75 BLOC	1	1
SEMI-ESFERA	1127.04.03077	PARAF. ALLEN 1/2" X 1.1/2" C/CAB. UNC	1	1
	1127.04.03079	SEMI-ESFERA Ø48	1	1
CARCACA	1127.04.02194	ANEL DESG.TH-80/400R - TH-100/250R/400R - TH-125/200R.S/250R.S/315S/400R.S	1	1
	1127.04.00775	BUJAO 1/2" BSP PRETA	3	3
	1127.04.02439	CARCACA TH-125/250	1	1
	1127.04.00329	PARAF.SEXT.BSW 1/2 x 1 1/2 RI	10	10

Kit Contra Flange		Bocal	Qtde
1127.04.00658	CONTRA FLANGE DN150 125LB PN16 BSP	SUC - 6"	1
1127.04.05551	CONTRA FLANGE ANSI DN125 125LB BSP	REC - 5"	1
1127.04.04309	PARAF.SEXT.UNC 3/4 x 3 RP	SUC/REC	16
1127.04.00636	PORCA SEXT.UNC 3/4"	SUC/REC	16
1127.04.07887	JUNTA BORRACHA P/C.FLANGE ANSI DN125 125LB BSP (5551)	SUC	1
1127.04.07900	JUNTA BORRACHA P/C.FLANGE DN150 125LB PN16 BSP (0658)	REC	1

OBS: Bomba com motor de 25,0 cv 4 Polos utiliza-se as peças de 30,0 cv